



DART 18 Gold Cup

July 23 to July 30, 2021

Société des Régates Rochelaises

La Rochelle, France

SAILING INSTRUCTIONS (SIs)

The notation '[NP]' in a rule of the sailing instructions (SIs) means that a boat may not protest another boat for breaking that rule. This changes RRS 60.1(a).

1. RULES

The event is governed by

- 1.1. the rules as defined in *The Racing Rules of Sailing*;
- 1.2. the national prescriptions which are to be found in appendix
- 1.3. the Federal regulations
- 1.4. the International DART Association rules.
- 1.5. If there is a conflict between the Notice of Race and the Sailing Instructions, then the Sailing Instructions will prevail.

2. CHANGES TO THE SAILING INSTRUCTIONS

- 2.1. Any change to the sailing instructions will be posted before 0900 on the day it will take effect, except that any change to the schedule of races will be posted by 2000 on the day before it will take effect.

3. COMMUNICATIONS WITH COMPETITORS

- 3.1. Notices to competitors will be posted on the official notice board located at www.dartworlds2021.com and near the race office.
- 3.2. The race office is located in a tent on the boat park

4. CODE OF CONDUCT

- 4.1. [DP] Competitors and support persons shall comply with reasonable requests from race officials.

5. SIGNALS MADE ASHORE

- 5.1. Signals made ashore will be displayed at *the top of the slipway*
- 5.2. When flag AP is displayed ashore, '1 minute' is replaced with 'not less than 45 minutes' in Race Signals AP.

6. SCHEDULE OF RACES

6.1.

Date	Dart Gold Cup
25 th July	races back to back
26 th July	races back to back
27 th July	races back to back
28 th July	Reserve day
29 th July	races back to back
30 th July	races back to back

6.2. The scheduled time of the warning signal for the first race each day is 1400.

6.3. To alert boats that a race or sequence of races will begin soon, the orange starting line flag will be displayed with one sound at least five minutes before a warning signal is made.

6.4. On the last scheduled day of racing no warning signal will be made after 1530

7. CLASS FLAGS

7.1. The Dart Class flag will be used as warning signal flag

8. RACING AREA

8.1. The racing area is south west of "plage des Minimes". SI Addendum A shows the location of the racing area.

9. COURSES

9.1. The diagram in SI Addendum B shows the course.

9.2. No later than the warning signal, the race committee signal vessel will display a pennant corresponding to the course number to be sailed.

9.3. No later than the warning signal, the race committee signal vessel will display the approximate compass bearing of the first leg.

9.4. Courses will not be shortened. This changes RRS 32.

10. MARKS

10.1. Mark(s) are

10.1.1. Mark 1, 3a, 3b: Black tetraedric buoys

10.1.2. Mark 2: blue conical buoy

10.2. New marks, as provided in SI 12, are orange cylindrical buoys.

11. THE START

11.1. Races will be started using RRS 26 with the warning signal made 4 minutes before the starting signal.

- 11.2. The starting line is between a staff displaying an orange flag on the signal boat at the starboard end and a staff displaying an orange flag on the pin end boat.
- 11.3. A boat that does not start within 4 minutes after her starting signal will be scored Did Not Start without a hearing. This changes RRS A5.1 and A5.2.

12. CHANGE OF THE NEXT LEG OF THE COURSE

- 12.1. To change the next leg of the course, the race committee will lay a new mark (or move the finishing line) and remove the original mark as soon as practicable. When in a subsequent change a new mark is replaced, it will be replaced by an original mark.

13. THE FINISH

- 13.1. The finishing line is between a staff displaying a blue flag on the signal vessel at the starboard end and the course side of the finishing mark (blue conical buoy) on the port end

14. PENALTY SYSTEM

- 14.1. RRS 44.1 is changed so that the Two-Turns Penalty is replaced by the One-Turn Penalty.
- 14.2. Appendix T, Arbitration, will apply.

15. TIME LIMITS

- 15.1. The Mark 1 Time Limit, Race Time Limit (see RRS 35), and the Finishing Window are shown in the table below.

Mark 1 Time Limit	Race Time Limit	Finishing Window
<i>40 minutes</i>	<i>120 minutes</i>	<i>30 minutes</i>

- 15.2. If no boat has passed the first mark within the Mark 1 Time Limit, the race will be abandoned.
- 15.3. The Finishing Window is the time for boats to finish after the first boat sails the course and finishes. Boats failing to finish within the Finishing Window, and not subsequently retiring, penalized or given redress, will be scored Time Limit Expired (TLE) without a hearing. A boat scored TLE shall be scored points for the finishing place one more than the points scored by the last boat that finished within the Finishing Window. This changes RRS 35, A5.1, A5.2 and A10.

16. HEARING REQUESTS

- 16.1. The protest time limit is 60 minutes after the last boat finishes the last race of the day or the race committee signals no more racing today, whichever is later. The time will be posted on the official notice board.
- 16.2. Hearing request forms are available from the race office in the tent on the boat park.

- 16.3. Notices will be posted no later than 15 minutes after the protest time limit to inform competitors of hearings in which they are parties or named as witnesses. Hearings will be held in the protest room, located near the race office, beginning at the time posted.
- 16.4. A list of boats that have been penalized for breaking RRS 42 under Appendix P will be posted.
- 16.5. RRS 62.2 and 66.2 apply.

17. SCORING

- 17.1. 4 races are required to be completed to constitute a series.
- 17.2. A boat's series score
 - 17.2.1. When less than 5 races have been completed, a boat's series score is the total of her race scores.
 - 17.2.2. When 5 to 8 races have been completed, a boat's series score is the total of her race scores excluding her worst score.
 - 17.2.3. When 9 or more races have been completed, a boat's series score is the total of her race scores excluding her two worst scores.
- 17.3. Rule A5.3 applies.

18. SAFETY REGULATIONS

- 18.1. [DP] A checking system (check in and check out) may be applied. If so, the terms will be specified by amendment.
- 18.2. [DP] A boat that retires from a race shall notify the race committee at the first reasonable opportunity. Promptly after returning ashore, the boat shall fill in a retirement declaration form, which is available at the Race office.

19. REPLACEMENT OF CREW OR EQUIPMENT

- 19.1. [DP] Substitution of competitors is not allowed without prior written approval of the Race committee
- 19.2. [DP] Substitution of damaged or lost equipment is not allowed unless authorized in writing by the technical committee. Requests for substitution shall be made to the committee at the first reasonable opportunity, which may be after the race.

20. EQUIPMENT AND MEASUREMENT CHECKS

- 20.1. A boat or equipment may be inspected at any time for compliance with the class rules, notice of race and sailing instructions.
- 20.2. [DP] When instructed by a race official on the water, a boat shall proceed to a designated area for inspection.

21. OFFICIAL VESSELS

- 21.1. Official vessels will be identified with an SRR flag.

22. [DP] SUPPORT TEAMS

- 22.1. Team leaders, coaches and other support persons shall stay outside the racing area from the preparatory signal for the first start

until all boats have finished or retired or the race committee signals a postponement, general recall or abandonment.

23. TRASH DISPOSAL

23.1. Trash may be placed aboard support person vessels.

24. PRIZES

24.1. The Organizing Authority may award prizes as follows:

24.1.1. The top 5 crew overall

24.1.2. Top finishing female crew

24.1.3. First female helm

24.1.4. Top finishing single-handed ("solo") competitor

24.1.5. Top finishing youth crew (both crew members 25 years of age or younger on 25th July 2021)

24.1.6. Top finishing master competitors (combined age of 90 or over on 25th July 2021)

25. RISK STATEMENT

25.1. RRS 3 states: 'The responsibility for a boat's decision to participate in a race or to continue to race is hers alone.' By participating in this event each competitor agrees and acknowledges that sailing is a potentially dangerous activity with inherent risks. These risks include strong winds and rough seas, sudden changes in weather, failure of equipment, boat handling errors, poor seamanship by other boats, loss of balance on an unstable platform and fatigue resulting in increased risk of injury. **Inherent in the sport of sailing is the risk of permanent, catastrophic injury or death by drowning, trauma, hypothermia or other causes.**

26. INSURANCE

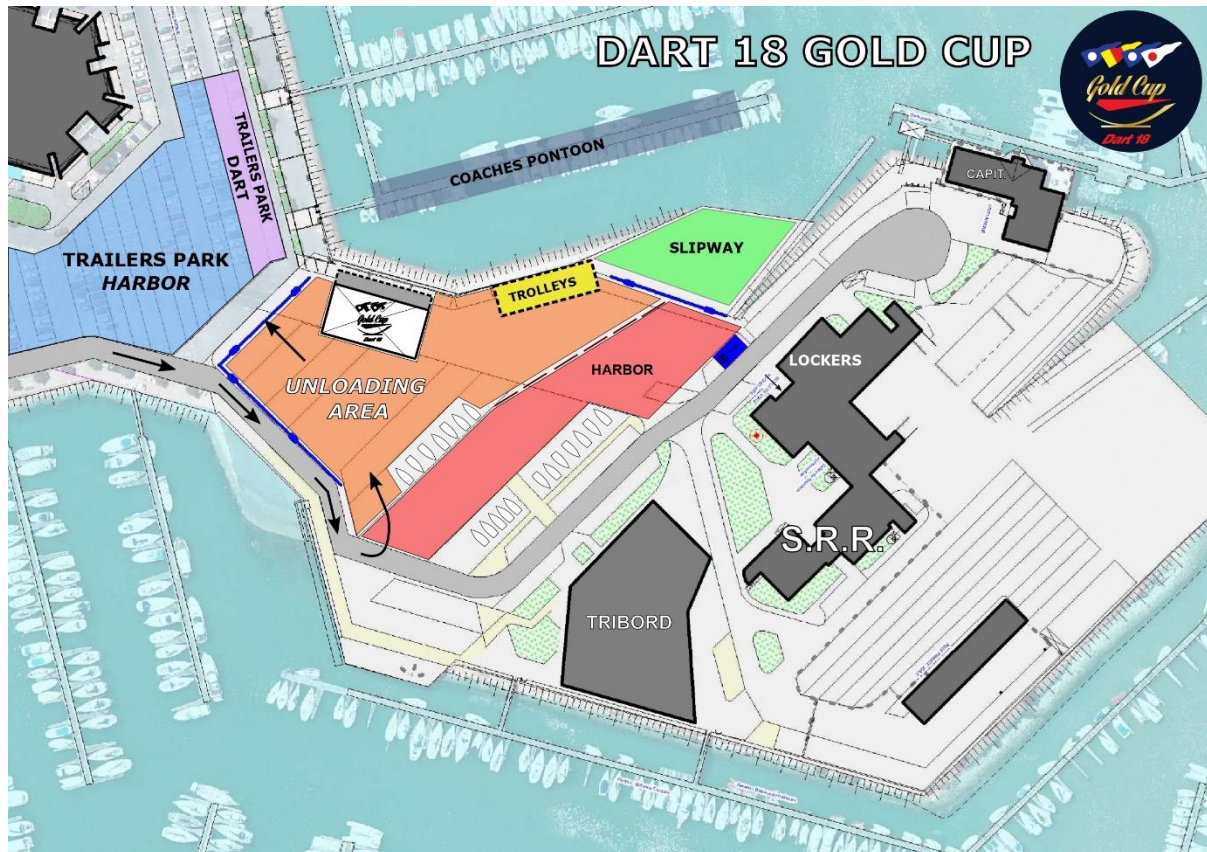
26.1. Each participating boat shall be insured with valid third-party liability insurance with a minimum cover of 2 000 000 Euros (two million euros) per incident or the equivalent.

SI ADDENDUM A

Racing Area



Land map



SI ADDENDUM B Course Diagram

Course	
Course 1	Start – 1 – 2 – <u>gate</u> (3a/3b) - Finish
Course 2	Start – 1 – 2 – <u>gate</u> (3a/3b) - 1 – 2 – <u>gate</u> (3a/3b) - Finish
Course 3	Start – 1 – 2 – <u>gate</u> (3a/3b) - 1 – 2 – <u>gate</u> (3a/3b) - 1 – 2 – <u>gate</u> (3a/3b) - Finish

